

TACT Switch™ Surface Mount Type

5.2mm Square Low-profile Type (Surface Mount) SKQG Series

Part number

SKQGAKE020

✔ Standard ?

Members Area

Save Item

MEMBERS ONLY

Basic information ▾

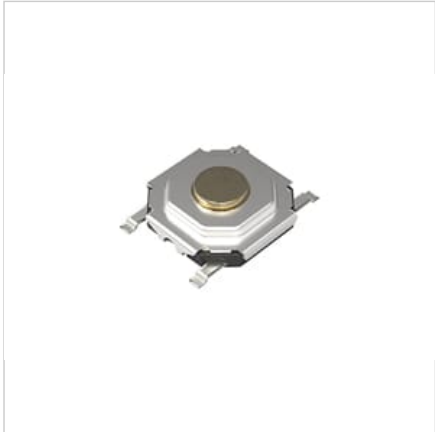
Dimensions ▾

Land Dimensions ▾

Circuit Diagram ▾

Packing Specifications ▾

Soldering Conditions ▾



NET SHOP

3D CAD

RoHS

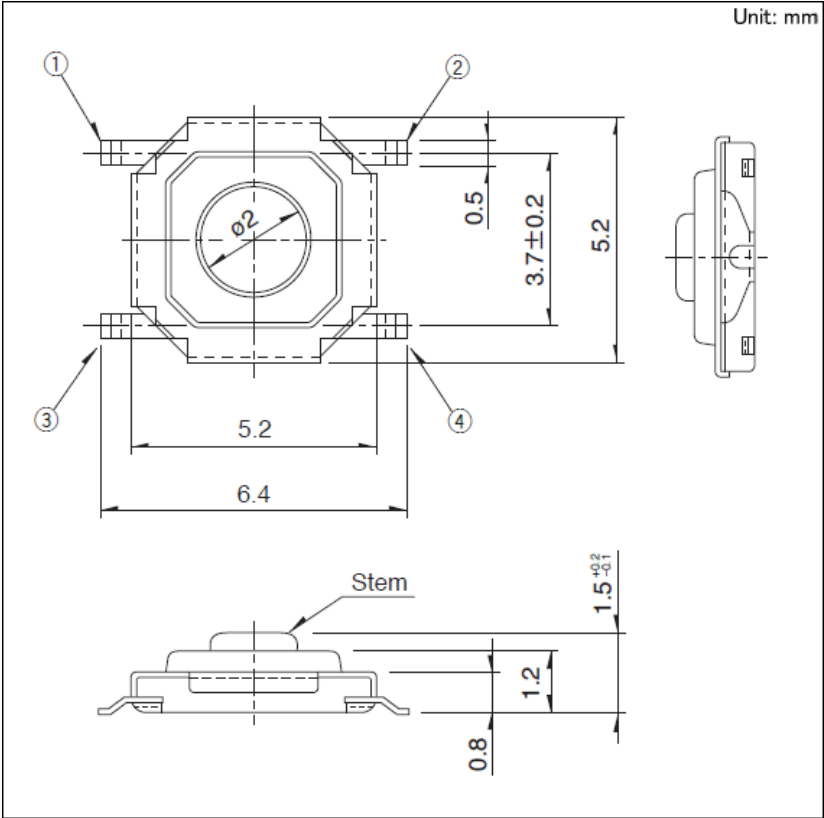
PDF Product Specification

Inquiry

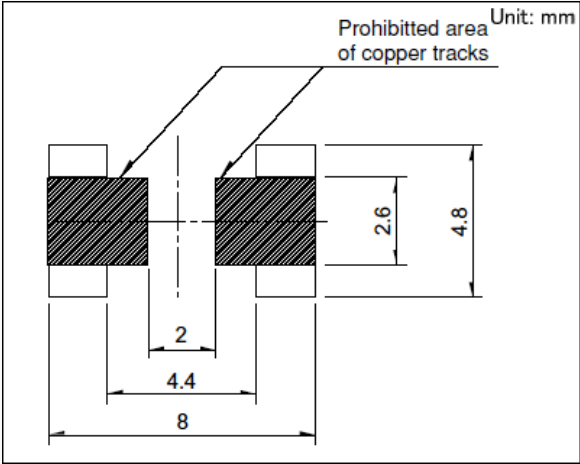
Print

Type	Surface mount	
Operating force	3.43N	
Operating direction	Top push	
Travel	0.25mm	
Product height	1.5mm	
Operating life(5mA 5V DC)	100,000 cycles	
Initial contact resistance	100mΩ max.	
Dimensions(W×D×H)	5.2 x 5.2×1.5	
Series type	Sharp feeling type	
Operating temperature range	−40℃ to +90℃	
Absolute Maximum Ratings	50mA 12V DC	
Rating (min.)	10 μA 1V DC	
Electrical performance	Insulation resistance	100MΩ min. 100V DC for 1 min.
	Voltage proof	250V AC for 1 min.
Durability	Vibration	10 to 55 to 10Hz/min., the amplitude is 1.5mm for all the frequencies, in the 3 direction of X, Y and Z for 2 hours respectively
Environmental performance	Cold	−40℃ 96h
	Dry heat	90℃ 96h
	Damp heat	60℃, 90 to 95%RH 96h
Minimum order unit(pcs.)	Japan	4,000
	Export	4,000

Dimensions

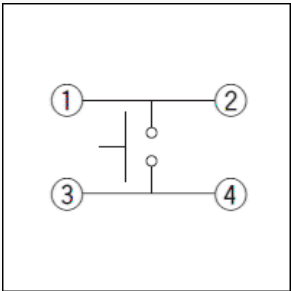


Land Dimensions



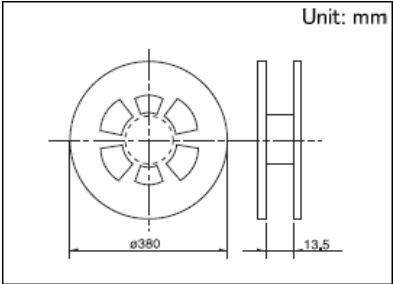
Viewed from mounting face.

Circuit Diagram



Packing Specifications

Taping



Number of packages (pcs.)

1 reel	4,000
1 case / Japan	40,000
1 case / export packing	40,000

Tape width (mm)

12

Export package measurements (mm)

395 × 395 × 205

Soldering Conditions

Condition for Reflow

1. Heating method
Double heating method with infrared heater.
2. Temperature measurement
Thermocouple 0.1 to 0.2 Φ CA(K) or CC(T) at solder joints (copper foil surface). A heat resisting tape should be used for fix measurement.
3. Temperature profile